



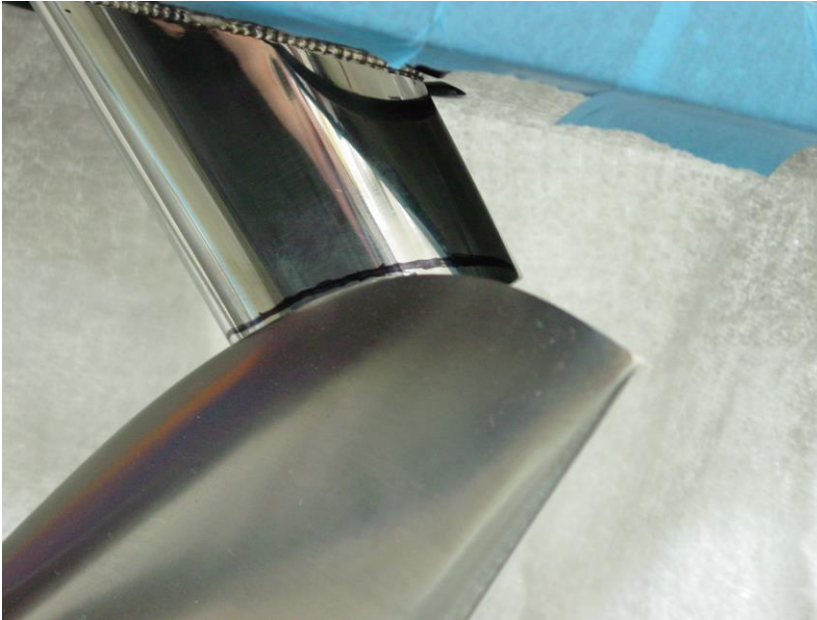
Teague Custom Marine 28115 Ave. Stanford Valencia, Ca 91355

M8 AERATOR INSTALLATION INSTRUCTIONS

Lower:

- Remove propeller
- Remove Mercathod unit.
- The three Mercathod mounting screws need to be enlarged to ¼-20. Use a #7 drill and 1/4-20 UNC tap.
- Mount drill template with three screws. NOTE: One hole has an "R" stamped next to it. This is the rearward (Aft) most hole. Ensure the template is oriented correctly! It will bolt on in the wrong way! Drill the two new holes with a #7 drill using the template as a guide. Remove template, and tap with ¼-20 UNC tap. If you did not purchase a drill template, you can install the lower, and use it to transfer punch the location of the two holes.
- You are now ready to install the lower and trim for proper clearance on your propeller.

- With a felt tip marker, mark approximate location of the leading edge of the prop on the oval tube of the stainless assembly. This can be done by gently rotating the prop close to the oval tube, and sighting along the side.



- Cut, sand, or grind off excess material up to your marked line. Go slowly and work up to your mark. If you remove too much of the oval tube, you will have to start over with a new one! You need to trim the oval tube until the propeller can spin freely, and there is 3/8" clearance between the leading edge of the propeller ear and the oval tube. This will require removing and re-installing the lower stainless assembly several times as you test fit it to the propeller. A plastic or wood pen, pencil, or dowel that is 3/8" in diameter works well as clearance gauge.



CAUTION! It is important that you maintain 3/8" clearance between the propeller and oval tube! Failure to do so will result in poor performance or damage to both the propeller and aerator assembly.

CAUTION! Lower stainless assemblies will often only be compatible with the propellers they were matched to. Anytime you change propellers, you must check for proper clearance! Often, propellers with different pitches or diameters will require their own set of matched lower stainless aerator assemblies! Failure to check for proper clearance can cause poor performance or damage to your propellers.

If you have any question about installing this product, please contact us at 661-295-7000 for assistance. Thank you.